



**HEAVY FORCE**



**COMPANY PROFILE**

**2020**

## Managing director's statement

The year 2020 has been remarkably astounding for the Heavy Force. The company maintained its market position as one of the eminent marine construction and project management companies in the Maldives. Consequently, with the privilege of internal strengths, the company has established a solid ground to compete and thrive in the dynamic and competitive industry of future through maximization of own experience, expertise and resources. A rewind to the year 2020 previews a robust operating outcome for the company.



Evidently, Heavy Force has maintained the goodwill of executing and delivering the projects promptly with uncompromised quality. Nevertheless, this resulted securing of new projects from new clients and repeaters as well. This signifies the effectiveness of our philosophy “The continuous improvement” we implement at every single step of our operation. Also, our victory dictates the dedication, hard work and expertise of our greatest asset, our employees.

Since the inception in 2005, Heavy Force has been growing significantly well. The company immensely diversified during the past 17 years of operation in the field of in marine and offshore construction. Which resulted in attainment of extensive capabilities in the field, helping to broaden the geographic footprint around the nation. This also caused a strong customer relationship that solidified the trust of clients and dependency on us as a contractor creating a new avenue for growth for Heavy Force.

Concerning the year 2020, the company has achieved a gainful year despite the challenges we faced amid COVID-19. Our year success is dictated with the number of new projects we secured and number of projects we completed. Which is no other than the pure result of the determination of our management and employees.

## Future

The odyssey of 2020 was incredibly challenging for Heavy Force. However, with determination of our team, the year turned out to be spectacular year for the company. The company embarked into the year 2020 in good shape with growing confidence. The future of the company looks promising as the company enhanced and strengthen its corporate profile during the year. With growing national economy and the potential projects in the pipeline including the government and the private sector gives a momentous hope of prosperous years head for the company. We look forward to continuing to execute on our strategy with the objective of growing shareholder value by leveraging our unique structure and with the determination of our employees to achieve an outstanding outcome.

Our strategic plan is to diversify our business within the context of construction and project management. We have a special focus on dredging and waterfront construction by increasing our asset base and human capacity as well. With changing condition of the economy, we expect Maldives economy will flourish in the coming year, thus it will bring new potential investors to the country especially in tourism sector. This will be a promising factor that it will increase the tendering of natural infrastructure development projects.

## Acknowledgement

Heartfelt gratitude is extended to the customers and clients of the company for their continuous collaboration in all aspects. We sincerely appreciate the hard-work and dedication of the employees towards our organization. Undoubtedly it is the capable employees and consultants of the company who are behind every accomplishment of the company.



Ibrahim Zameer

Managing Director

## Company profile

The company was incorporated on the 3rd March of 2005, since inception the company has been thriving a sustainable growth. Today Heavy Force is a leading marine and offshore construction company which specialized in executing complex infrastructure development projects for the government and the private sector of the Maldives. Though company is in the 17th year of the operation, the management team of the company has an average 24 years of industry experience specializing in respective fields. Being a professionally managed company, the Heavy Force is also registered as a class 1 contractor in the field of harbor and marine construction in the ministry of national planning, housing and infrastructure. A major focus of the company is on waterfront development offering a wide range of services. We function as one -stop-shop for all projects demands of our customers relating to onshore and offshore activities. The dynamic team of engineers and project managers at Heavy Force aims to cater you with innovative solutions for



your project demands and ongoing operation challenges on time and within the budget. Our diverse operation portfolios include, engineering and project management, dredging, waterfront, construction, inland infrastructure construction, logistics support, demolition and cleanup of work sites etc.



The operational team of Heavy Force is equipped with heavy machineries such as dredgers, pile driving equipment, excavators, wheel loaders, dump trucks, landing crafts, barges, workboats and so on. With virtue of having superior advantage in technique, equipment, marketing and manpower, Heavy Force is providing prestigious service nationally and has become a renowned brand in the field of marine and waterfront construction in the Maldives.

## Vision and mission

### **Vision**

At Heavy Force, we endeavor to be the first preferred contractor for, dredging waterfront construction, inland infrastructure construction, engineering and project management and logistics support in the Maldives.

### **Mission**

Heavy Force is dedicated in meeting the needs of our customers and clients by earning their confidence and trust while enhancing the quality of our services. We are committed to expand and diversify our business into potential growth area to meet our customer demands by creating innovative, sustainable solutions and safe working conditions in close cooperation with our



clients. At Heavy Force, we strive to be a responsible and active member of the economic and social community of the republic of the Maldives.

## Core value and guiding principles

### **Employees**

The Major asset of Heavy Force is its employees. Above anything else, it is their capabilities, experience and teamwork which enable the delivery of services and to achieve the company's mission. The Company's priority is the recruitment, development and retention of a skill base matched to its service. We provide skills, resources and authority to assist people in making informed decisions.

### **Honesty**

At Heavy Force we work together with integrity and with the highest ethical standards in executing any work.

### **Passion and ingenuity**

At Heavy Force we love what we do, taking the lead, and leading by example, always striving to achieve excellence.

### **Safety**

Maintaining safe working conditions for all who work with us is the overriding objective for all managers, supervisors, and staff. Safety has priority over any activity or deadline.

### **Risk**

The Principles of good corporate governance require that we assess its major risks and develop and implement mitigation strategies. The company's management shall regularly review its corporate risks, and project managers, engineers, are required to review the risks within their project.

### **Quality**

Delivering projects to time, cost and specification and satisfying customers and stakeholders in all aspects of the company's performance, are key to maintaining the company's reputation. The expectation in the company shall be that all aspects of its operations meet the requirements of international standards related to works being carried out.

## **Environment**

we strive to excel further in complying with national and international environment statutory requirements

## **Operational portfolio**

### **Engineering and project management**

Employees and consultants of Heavy Force are skilled and qualified engineering professionals with experience in; supervisory, management, technical and engineering skills. The engineering and project management team forms the core of our organization, which specialized in design, plan, organize, secure and manage resources to ensure the successful completion of complex engineering projects on time and within the budget. We work with our clients to meeting the unique goals and objectives, to bring about beneficial change or add value through the deployment of a distinct range of technical skills and the adaptation of disciplined engineering and project management methodologies. The civil engineering industry is the primary sector for our business. We work closely with reputable clients and contractors throughout the Maldives in

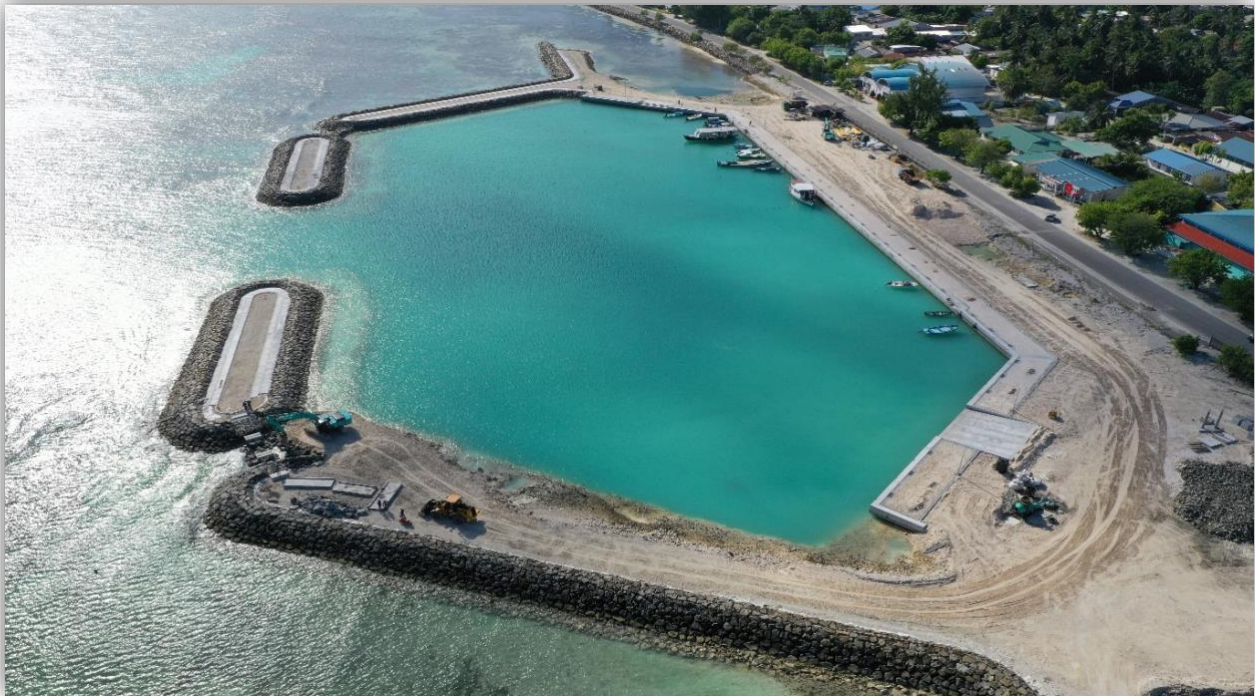




delivering projects including, but not limited to; dredging and land reclamation, port and harbor construction, public infrastructure, earthworks etc. our mechanical engineering team works round the clock in maintaining our growing fleet of equipment and machineries in operational condition.

### **Dredging and land reclamation**

Dredging and land reclamation has been one of the core business of Heavy Force. It consists of the removal of materials from the waterbed, typically for the purpose of deepening of navigation channels and ports. In most cases, the dredged materials are utilized in the reclamation of land. This work is normally carried out in conjunction with our waterfront construction works.



### **Waterfront construction**

In line with the dredging works, Heavy Force is specialized in waterfront construction. Heavy Force contributes to the national marine infrastructure development in the following areas and protecting our venerable islands: construction of wharves, berths, Marinas, ports, harbours, coastal protection (breakwater & revetments), sheet piling works, beach refurbishment, rock boulder placements and geo-bag installation.





### **Inland infrastructure construction**

While the company is specialized in marine and waterfront construction, it also has the capacity to provide services in inland infrastructure development which are related to its core business such as road construction, paving and logistical support for resort development projects.



## Logistical support

Our logistic division functions as the backbone of the organization and provides logistical support to our large-scale multidisciplinary construction and project management services. This includes fabrication, modularization, offsite pre-assembly, procurement, marine transportation of Bulk cargo, equipment rental, heavy lifting, salvage operation, customs clearance, decommissioning and removal of construction waste and transportation of waste from one location to another.



## Five years of major projects history

### 2020 and Ongoing

Project	Client	Value in MVR
GA.Kolamaafushi & Gdh. Hoandeddhoo harbor	MNPHI	119.61 Million
M.Madifushi shore protection and civil works	Maldives inflight catering	18.80 Million
Dh.Rinbudhoo harbor project	MNPHI	29.41 Million
Th.Omadhoo harbor project	MNPHI	32.22 Million
S.Maradhoofeydhoo harbor project	MNPHI	31.69 Million
R.Rasgetheemu Harbour	MNPHI	50.00 Million
Adh.Dhidhdhoo Harbour	MNPHI	21.95 Million

## Year 2019

Project	Client	Value in MVR
GA.Kolamaafushi & Gdh. Hoandeddhoo harbor	MNPHI	119.61 Million
M.Madifushi shore protection and civil works	Maldives inflight catering	18.80 Million
Dh.Rinbudhoo harbor project	MNPHI	29.41 Million
Th.Omadhoo harbor project	MNPHI	32.22 Million
S.Maradhoofeydhoo harbor project	MNPHI	31.69 Million
Meeru Island Jetty works	Meeru Island Resorts	15.63 Million
VIA Cargo quay wall works	MACL	22.64 Million
VIA S.W Harbor works	MACL	43.80 Million

## Year 2018

Project	Client	Value in MVR
Madivaru Shore Protection	Shuaz Investment Pvt Ltd	14.10 Million
Madifushi entrance channel	Hulhule Island Hotel	03.92 Million
Hulhumale' P1 Piling	Housing Development Corp	21.24 Million
Muravandhoo Coastal Protection	Alibey Maldives Pvt Ltd	10.58 Million
Fullmoon channel & coastal works	Sheraton Hotels Maldives	10.38 Million
Gaakoshibee beach and coastal works	GBH Maldives Resorts	24.83 Million
Madifushi channel dredging	Hulhule Island Hotel	03.70 Million
Madifushi revetment & bird island works	Hulhule Island Hotel	03.92 Million
Madifushi Sewage and outfall works	Hulhule Island Hotel	10.56 Million
Conrad resort deep water piling and jetty works	Crown Company Pvt Ltd	10.37 Million



### Year 2017

Project	Client	Value in MVR
K. Gaafaru harbor development project	Ministry of Housing	44.00 Million
Madifushi beach refurbishment project	Hulhule Island Hotel	12.50 Million
Kelaa harbor project	Capital Investment & Finance	20.10 Million
Gdh.Gahdho shore protection	Ministry of Environment	20.00 Million

### Year 2016

Project	Client	Value in MVR
Mahakanfushi harbor project	MMPRC	16.08 Million
Dh.Kudahuvadhoo shore protection	Capital Investment & Finance	05.46 Million
Utheemu harbor development	Ministry of Housing	28.98 Million
Hirimaradhoo harbor development	Ministry of Housing	25.20 Million
Nehlaidhoo harbor development	Ministry of Housing	26.64 Million
Kurinbi harbor development	Ministry of Housing	19.00 Million

### Year 2015

Project	Client	Value in MVR
B.Eydhafushi breakwater	Ahmed Nazeer	03.69 Million
Dh. Meedhoo coastal protection	Capital Investment & Finance	06.08 Million
B.Eydhafushi coastal protection	Capital Investment & Finance	10.79 Million
Hulhumale' P2 reclamation & bund works	Dredging International	04.97 Million
Gasfinolhu harbor and beach works	Gasfinolhu Island Resort	08.50 Million
Island Hideaway pool piling works	Hideaway Beach resort & Spa	01.74 Million
Hulhumale P1 dredging & sheet piling	Housing Development Corp	36.65 Million
Hurawalhi pool piling works	Hurawalhi Island Resort	03.45 Million
Hollow piling works at Hurawalhi	Hurawalhi Island Resort	04.65 Million
Meeru island resort jetty column driving	Meeru Island Resorts	03.90 Million
Hulhumale P2 coastal protection	Mohan Mutha Exports	06.40 Million

## Project Portfolio



Project Management



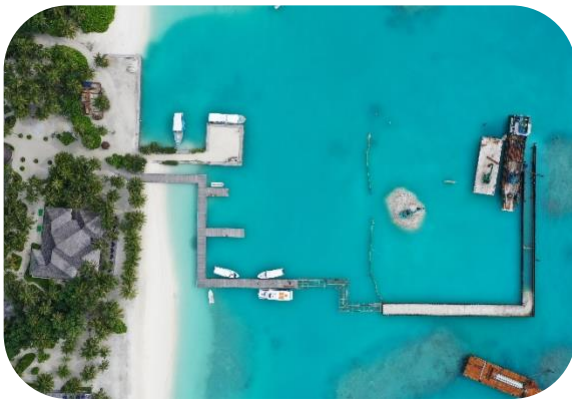
Engineering & Design



Surveying



Dredging



Making of Wharfs & Berths



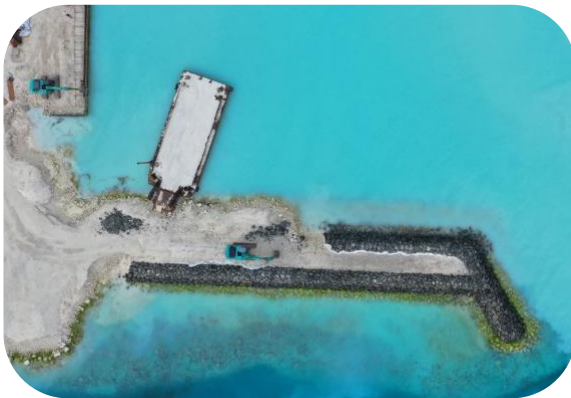
Land reclamation



Sheet piling



Beach Refurbishment



Coastal protection



Geobag installation



Marinas and ports



Beach profiling





Precasting works



Pavement works



Logistics service



Cargo movements



Demolition works



Waste clearance



Football pitch works



Other supports

## Company fleet



Dredgers



Landing crafts



Excavators



Wheel loaders





Dump trucks



Cranes

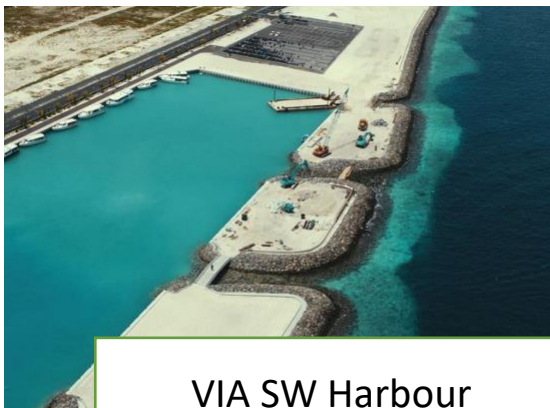


Barges

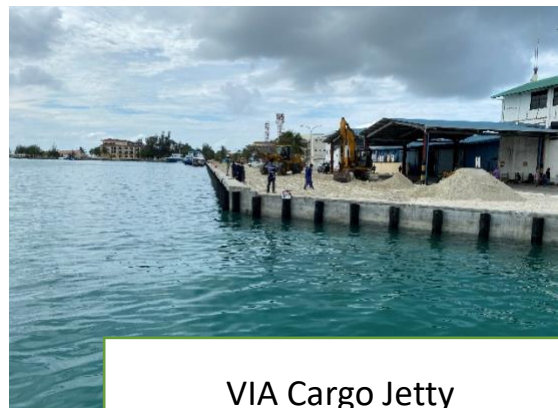


Piling hammers

## Highlights



VIA SW Harbour



VIA Cargo Jetty





Meeru island jetty



Rinbudhoo bridge

## Corporate social responsibility

Heavy Force has an established tradition of Supporting local communities in which it operates. We seek to identify community sponsorships and partnerships that align with the interests of local communities close to its projects, in addition to larger projects which provide strong synergies with Heavy Force's values-based culture. Likewise, Heavy Force has conducted numerous voluntary works to benefit the communities in the year 2020.

Under our philosophy of corporate social responsibility, we aim to contribute to the projects that enable community wider benefits rather than individual gains. Through our contributions we ensure that collectively our projects benefit to the children, youth and elders of the community while contributing good for the sustainability of the environment. With this philosophy in mind, we aim to develop projects that are related to garbage disposal, roads, beach profiling etc.

## Significant CSR projects carried out



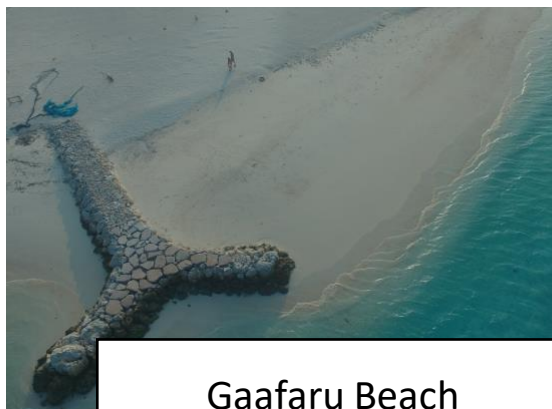
### **Alifushi Football Pitch sub-surface works**

Heavy Force carried out sub-surface works of Alifushi football pitch, the works include, excavating and removing loose-sand layer, collecting compactable sand and spreading across the pitch by compacting it to solid to install turf. The company also installed drainage system of the pitch by installing curbstones and pits around the pitch. Additionally, the company helped in cleaning island waste yard twice.

## Angolhatheem Futsal ground cleaning works



## Past CSR works

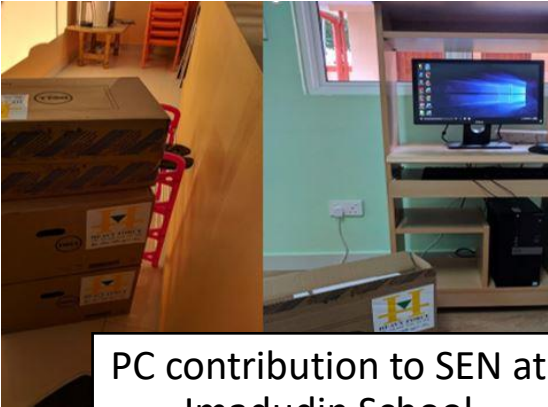


Gaafaru Beach



Lh.Kurendhoo pitch sub-surface works





PC contribution to SEN at  
Imadudin School



Building of arrival pier at  
Utheem



Utheem access road



Hirimaradhoo access roads  
clean



## COMPANY PROFILE

### 2020